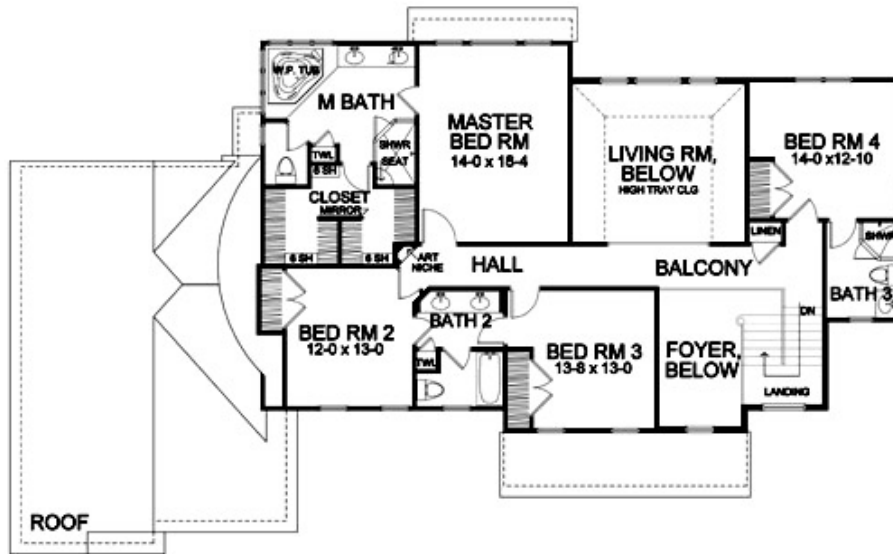


Lot 354 Autumn Woods

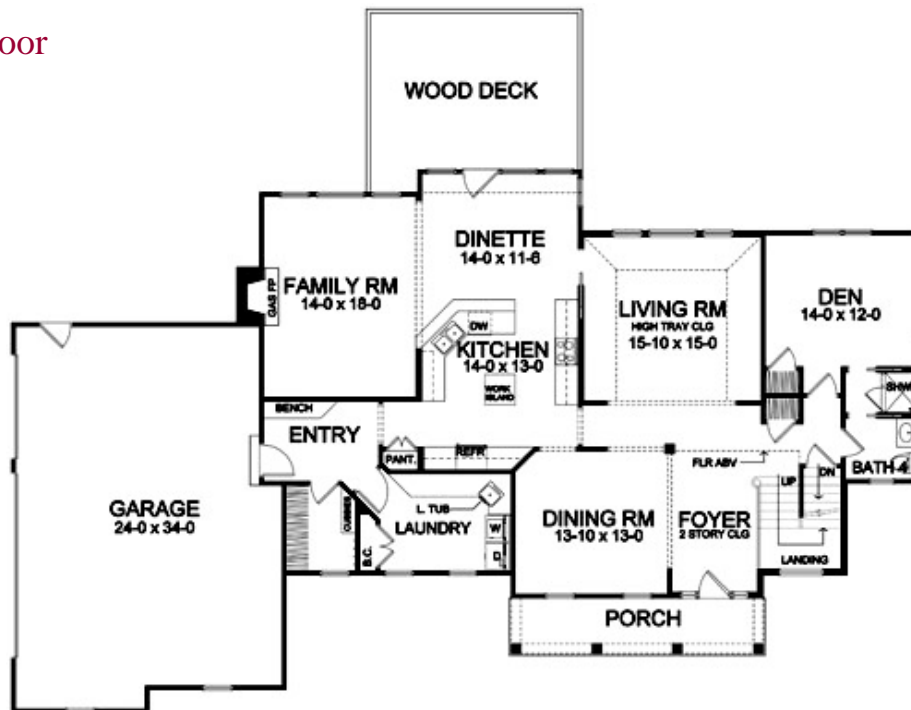


Paradigm Productions, LLC
www.paradigm.com jpl 2007

Woodstone Custom Homes, Inc. • 15 Fishers Road, Suite 114 • Pittsford, New York 14534



Second Floor



First Floor

*Dimensions shown are approximate and not final. All dimensions are subject to change prior to or during construction
 © Copyright 2003 Patrick J. Morabito, AIA Architect. These drawings may not be reproduced in any form without written permission from Patrick J. Morabito, AIA Architect and Woodstone Custom Homes, Inc.*



Lot 354 -- Plan Specifications

- Square Footage:
 First Floor 1,833
 Second Floor 1,406
 Total 3,239
- Three Car Garage
- Large Front Porch with Copper Roof
- Four Baths
- Whirlpool Tub in Master Bath
- Four Bedrooms
- Two-Story Living Room with Overlook
- Wood-Mode Cabinetry, Corian Kitchen Counters, Cultured Marble Vanity Tops
- Hardwood Floors in Dining Room, Foyer, Pantry, Kitchen, and Dinette
- Ceramic Tile Floors in Baths, Entry, Powder, and Laundry
- Crown Moldings in Dining Room, Den, Foyer, Balcony, and Master Bedroom
- Asphalt Driveway
- Security System and Professional Landscaping
- New York State Energy Star Labeled Home



585-586-0953