

Lot 305 Autumn Woods



paradigm
www.woodstone.com
© 2005 Paradigm Productions

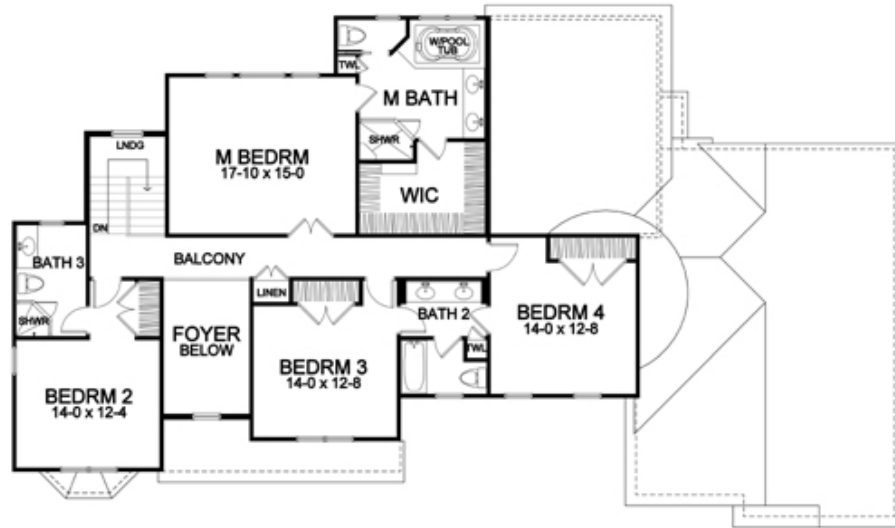
Woodstone Custom Homes, Inc. • 15 Fishers Road, Suite 114 • Pittsford, New York 14534 • www.woodstonenet.com

AUTUMN WOODS

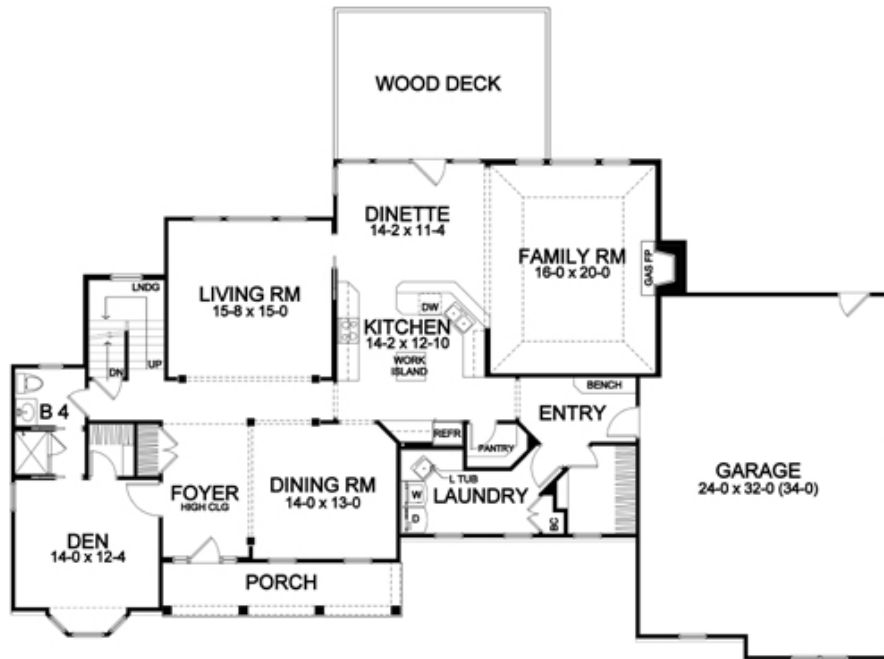
Lot 305 (36 Amber Hill Drive) Plan Specifications

- Square Footage:

First Floor	1,965
Second Floor	1,480
Total	3,445
- Three-Car Garage
- Brick and Shutters Accent Front
- Large Front Entry Porch
- Formal LR and DR
- First Floor Den with Access to Full Bath
- Four Bedrooms and Three Baths on Second Floor
- Wood-Mode Cabinetry, Granite Kitchen Counters, Cultured Marble Vanity Tops
- Hardwood Floors in Foyer, Living Room, Dining Room, Kitchen, and Dinette
- Ceramic Tile Floors in Baths, Entry, and Laundry
- Crown Moldings in LR, DR, and Foyer
- Interior columns to LR and DR
- Whirlpool Tub in Master Bath
- Security System; Asphalt Driveway and Professional Landscaping
- NY State Energy Star Labeled Home



Second Floor



First Floor

Dimensions shown are approximate and not final. All dimensions are subject to change prior to or during construction
© Copyright 2003 Patrick J. Morabito, AIA Architect. These drawings may not be reproduced in any form without written permission from Patrick J. Morabito, AIA Architect and Woodstone Custom Homes, Inc.



585-586-0953