

# *Lot 217 Autumn Woods*



*Woodstone Custom Homes, Inc. • 15 Fishers Road, Suite 114 • Pittsford, New York 14534 • [www.woodstonenet.com](http://www.woodstonenet.com)*

# AUTUMN WOODS

## Lot 217 (47 Turning Leaf Drive) Plan Specifications

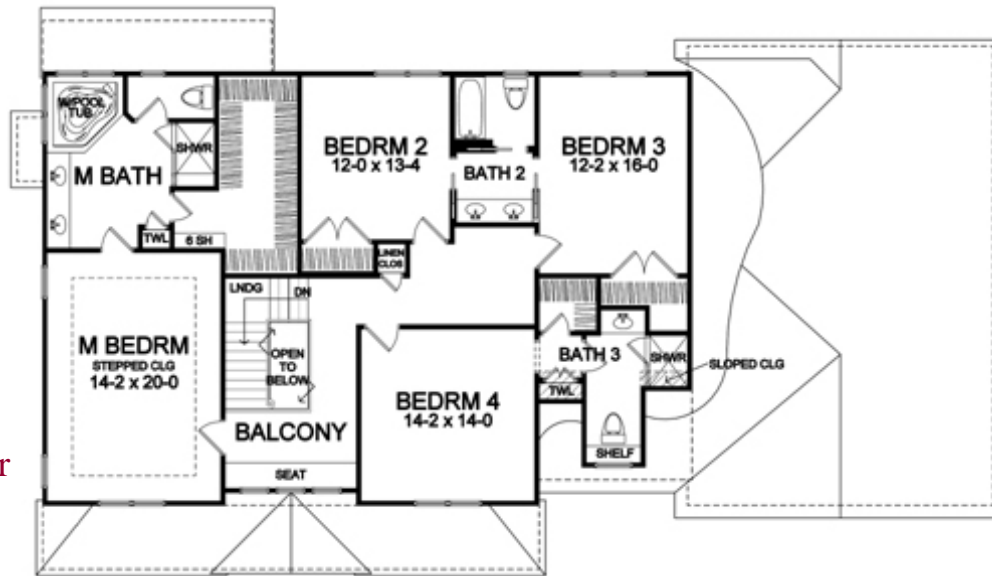
- Square Footage:
 

First Floor	1,792
Second Floor	1,582
Total	3,374
- Three Car Side-Load Garage
- Unfinished Walk-Out Basement
- Large Porch and Shutters Accent Front
- First Floor Den
- Formal Dining and Living Room
- Four Bedrooms; Three Bathrooms and One Powder Room; Whirlpool in Master Bathroom
- Wood-Mode Cabinetry, Granite Kitchen Counters, Cultured Marble Vanity Tops
- Hardwood Floors in Foyer, Dining Room, Kitchen, Dinette, and Pantry
- Ceramic Tile Floors in Baths, Entry, and Laundry
- Crown Molding in DR, LR, FR, Den, Foyer, Master Bedroom, and Balcony
- Security System; Asphalt Driveway and Professional Landscaping
- NYS Energy Star Labeled Home

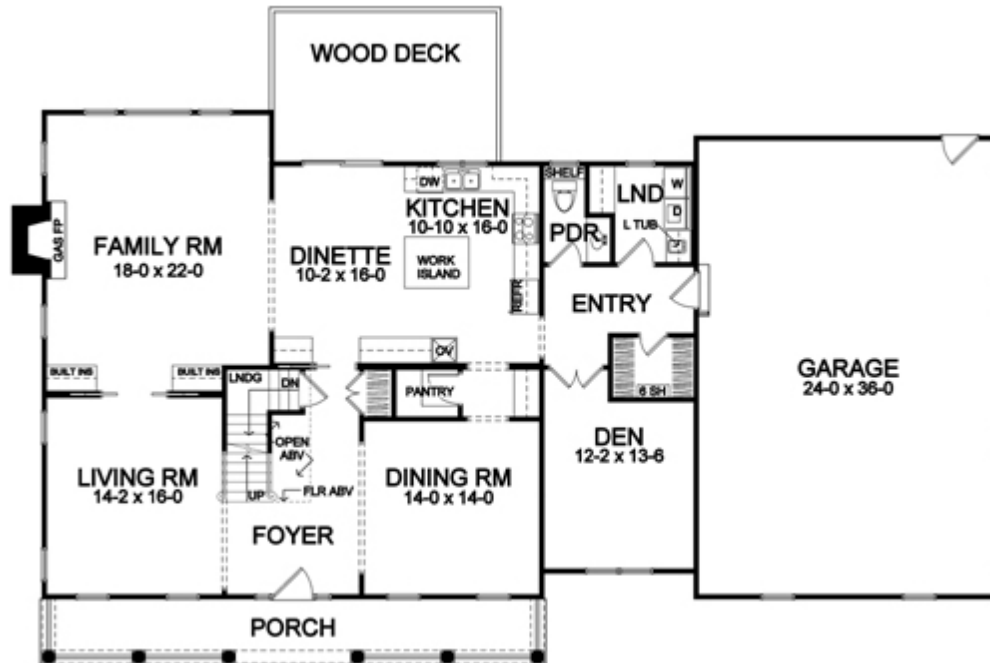


585-586-0953

Second Floor



First Floor



Dimensions shown are approximate and not final. All dimensions are subject to change prior to or during construction  
© Copyright 2003 Patrick J. Morabito, AIA Architect. These drawings may not be reproduced in any form without written permission from Patrick J. Morabito, AIA Architect and Woodstone Custom Homes, Inc.